

MONTHLY MEMBERSHIP PROGRESS REPORT

District 325 H

Results as of: 6/30/2025

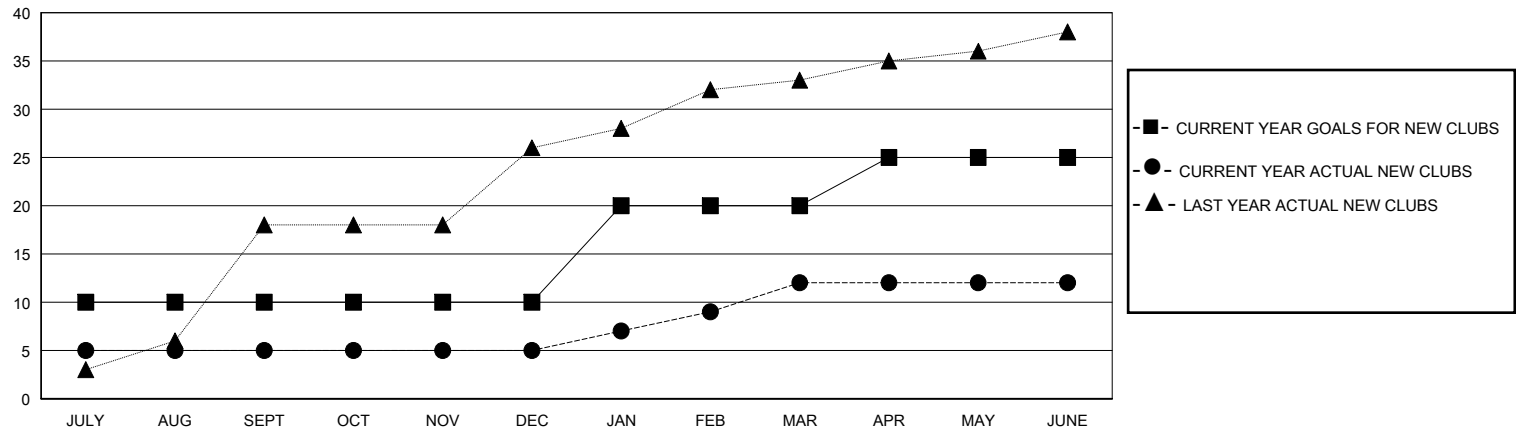
GMT:

LOCATION NEPAL

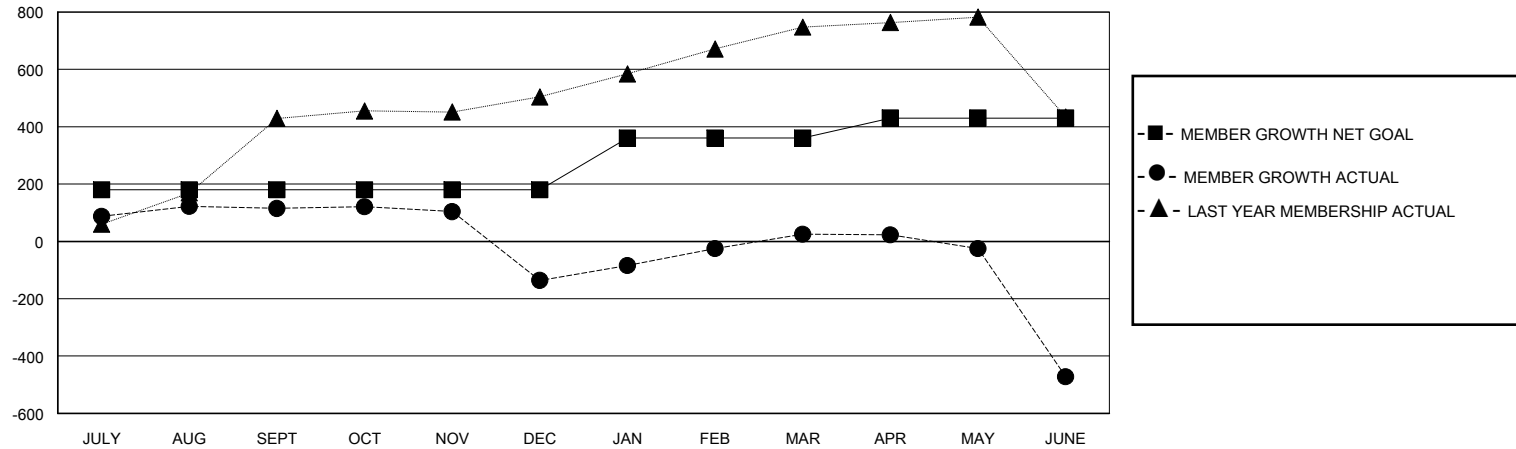
GMT CA

| Clubs | | | | Members | | | |
|-----------------------|---------------|-----------|---------------|-----------------------|------------------------|----------------------|--|
| RESULTS FOR 2024-2025 | | | | RESULTS FOR 2024-2025 | | | |
| QUARTER | NEW CLUB GOAL | NEW CLUBS | DROPPED CLUBS | QUARTER | MEMBER GROWTH NET GOAL | MEMBER GROWTH ACTUAL | DROPPED MEMBERS ACTUAL (including transfers) |
| JULY/AUG/SEPT | 10 | 5 | 5 | JULY/AUG/SEPT | 180 | 241 | 112 |
| OCT/NOV/DEC | 0 | 0 | 6 | OCT/NOV/DEC | 0 | 66 | 274 |
| JAN/FEB/MAR | 10 | 7 | 1 | JAN/FEB/MAR | 180 | 201 | 30 |
| APR/MAY/JUNE | 5 | 0 | 5 | APR/MAY/JUNE | 70 | 49 | 523 |

GOALS AND ACTUAL NEW CLUBS CUMULATIVE



GOALS AND ACTUAL MEMBERS CUMULATIVE



| | | | | |
|------------------------|--|---|---------------------------------|----------------|
| DROPPED CLUBS: 17 | | 64 CLUBS OF 127 ADDED 1 OR MORE NEW MEMBERS | <u>GENDER DISTRIBUTION</u> | |
| | | | MALE | 1,497 (67.28%) |
| | | | FEMALE | 728 (32.72%) |
| <u>DROPPED MEMBERS</u> | | CLICK HERE FOR CUMULATIVE MEMBERSHIP DATA | | |
| DECEASED | | | TOTAL FAMILY UNIT MEMBERS | |
| CLUB CANCELLED | | | 529 | |
| OTHER | | | FAMILY MEMBERS PAYING HALF DUES | |
| TOTAL | | | 304 | |